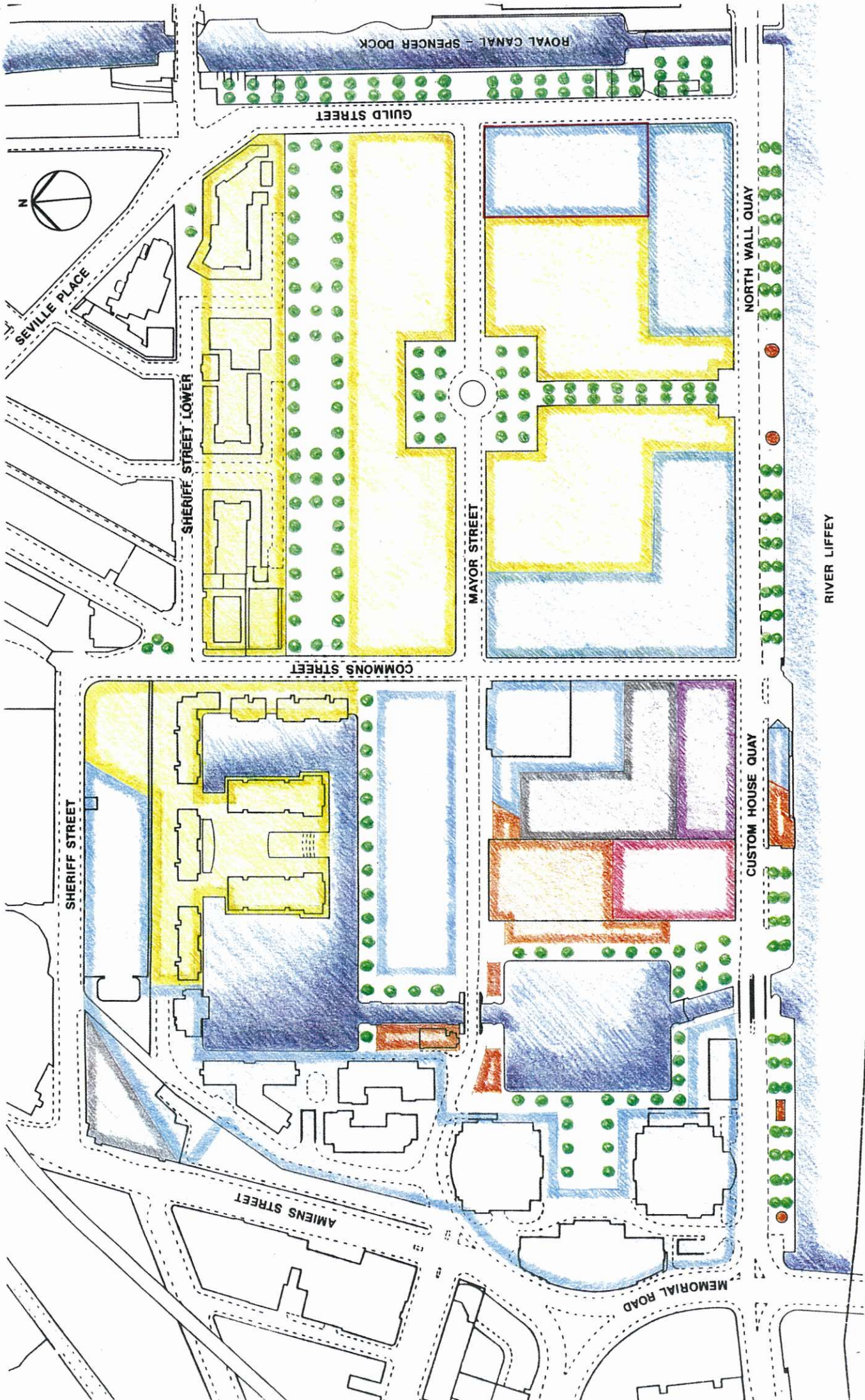


# REVISED PRIMARY LAND USE MAP 9



AREA TO BE REASSIGNED FROM RESIDENTIAL TO OFFICE USE

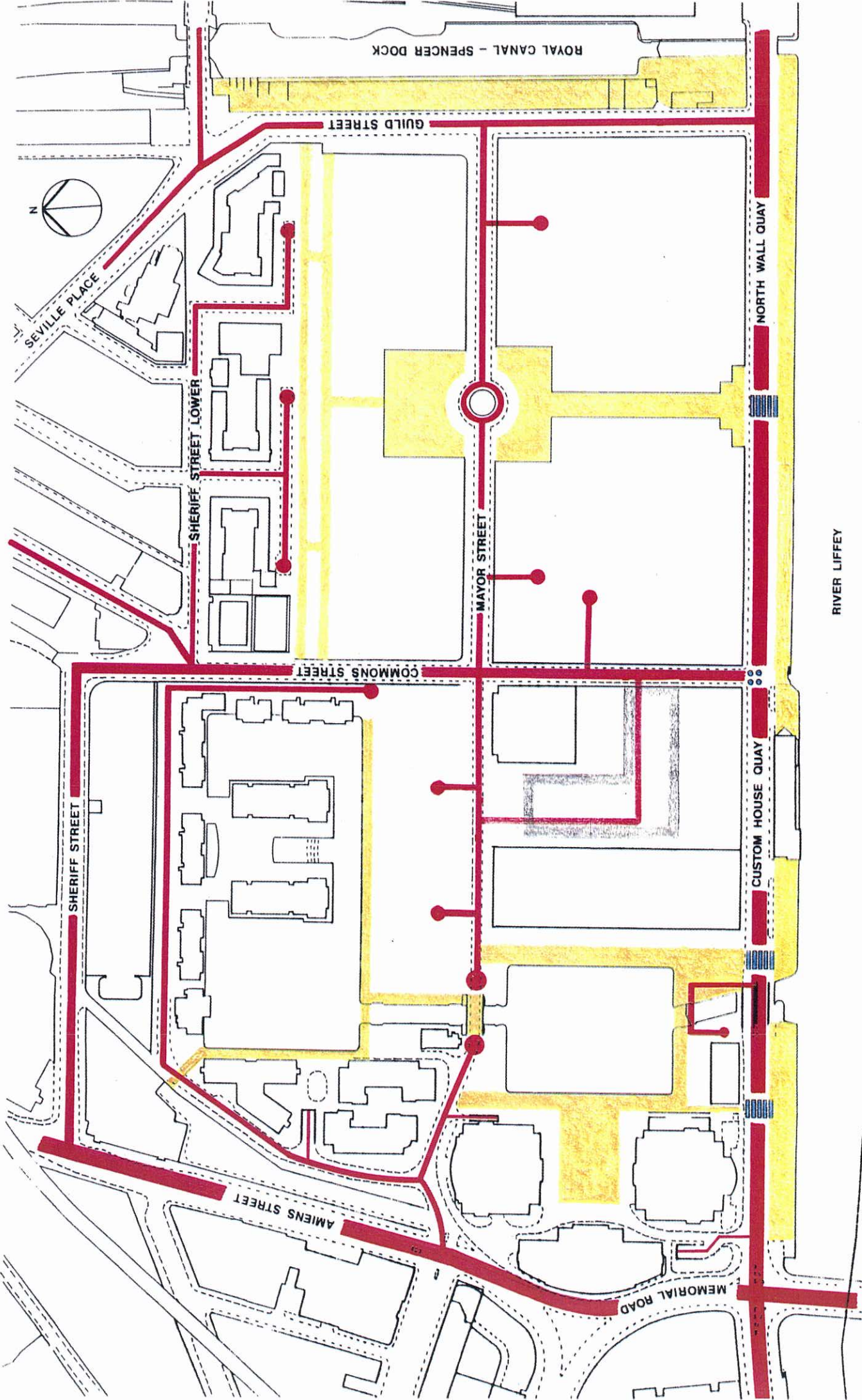


- HOTEL
- MULTISTOREY CARPARK / TRANSPORT
- MAJOR PUBLIC ATTRACTION



- RESIDENTIAL
- OFFICES
- RETAIL





-  PEDESTRIAN ROUTES / MAIN PEDESTRIANISED AREAS
-  VEHICULAR TRAFFIC CIRCULATION ROUTES
-  MULTISTOREY CARPARK
-  PEDESTRIAN CROSSING
-  SIGNALISED JUNCTION

RIVER LIFFEY