

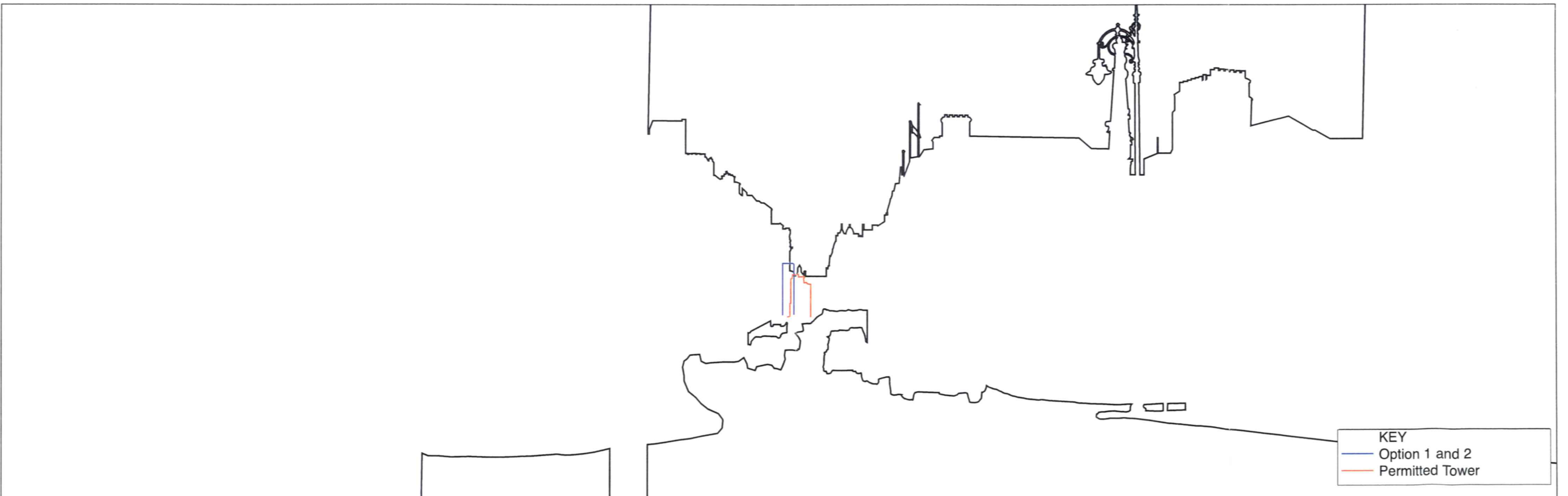
73.5° | 60° | 57° | 50° | 40° | 30° | ANGLE OF VISION SCALE | 30° | 40° | 50° | 57° | 60° | 73.5°







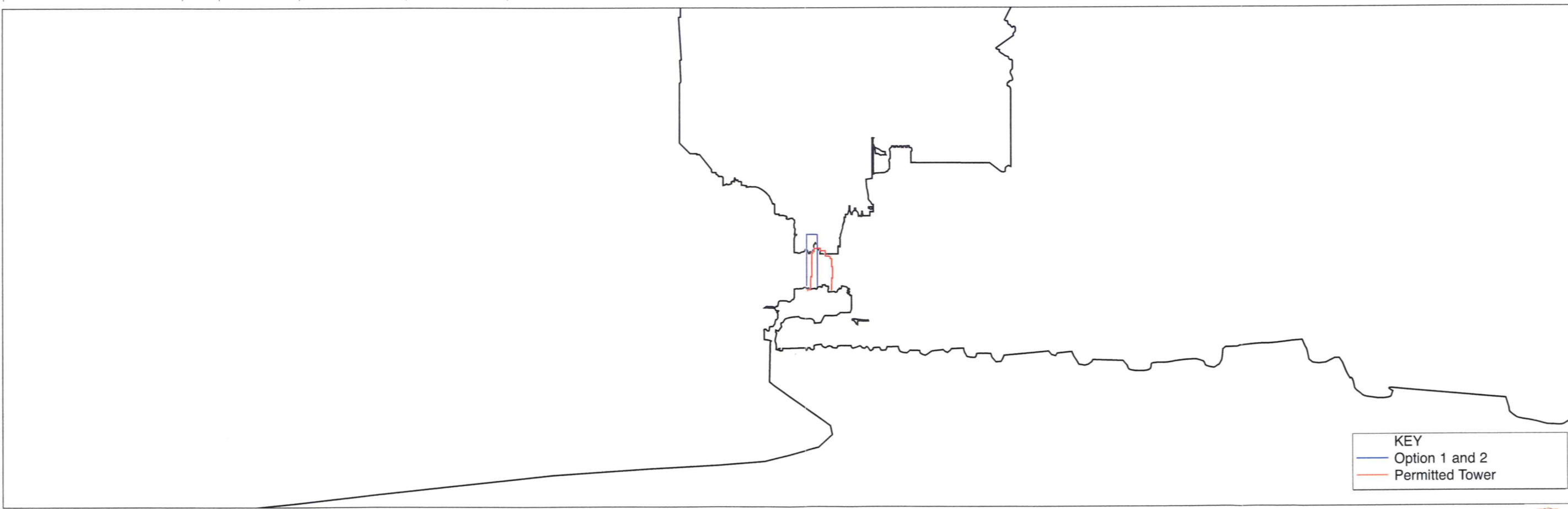
73.5° | 60° | 57° | 50° | 40° | 30° | ANGLE OF VISION SCALE | 30° | 40° | 50° | 57° | 60° | 73.5°







73.5° | 60° | 57° | 50° | 40° | 30° | ANGLE OF VISION SCALE | 30° | 40° | 50° | 57° | 60° | 73.5°







73.5° | 60° | 57° | 50° | 40° | 30° | ANGLE OF VISION SCALE | 30° | 40° | 50° | 57° | 60° | 73.5°

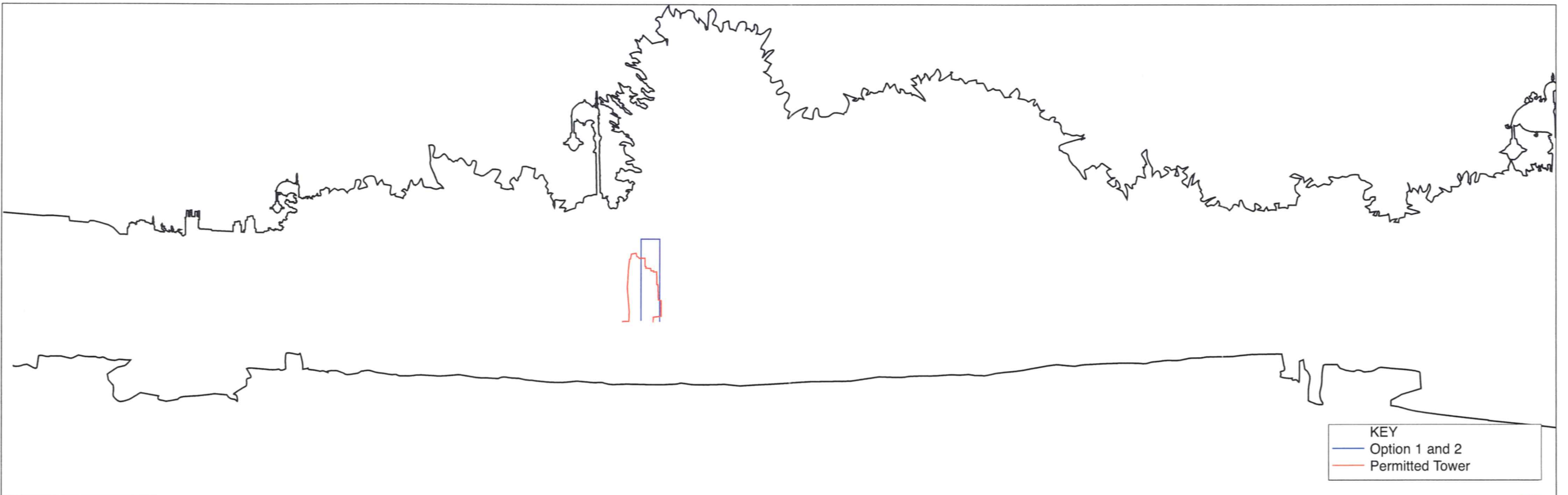


KEY  
 — Option 1 and 2  
 — Permitted Tower





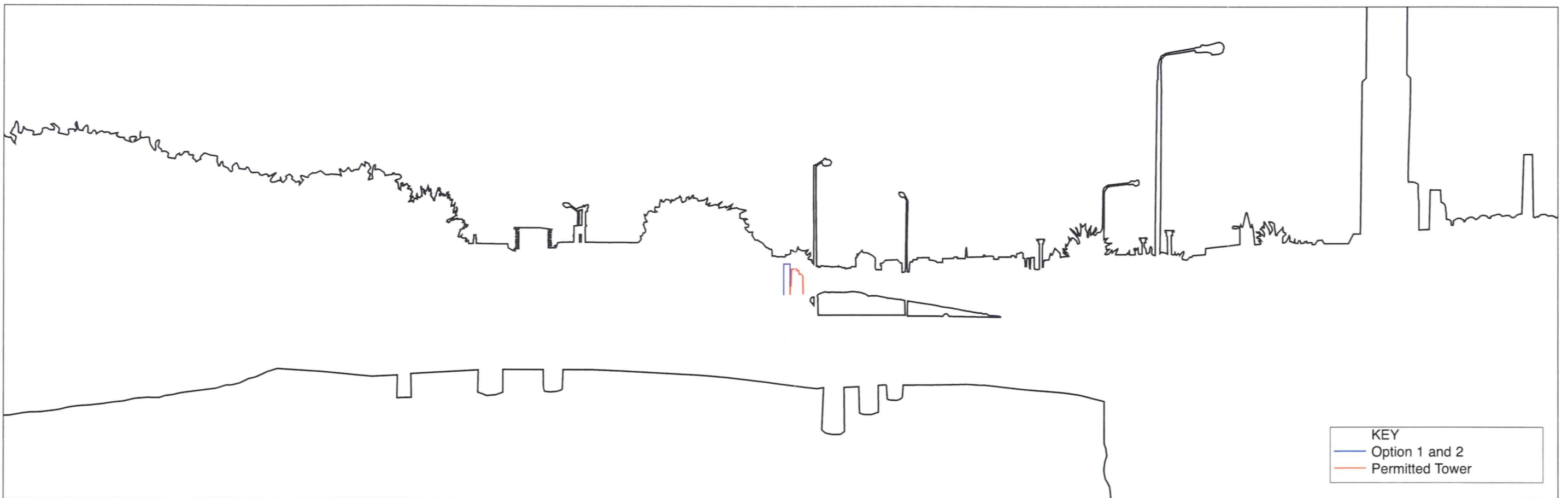
73.5° | 60° | 57° | 50° | 40° | 30° | ANGLE OF VISION SCALE | 30° | 40° | 50° | 57° | 60° | 73.5°







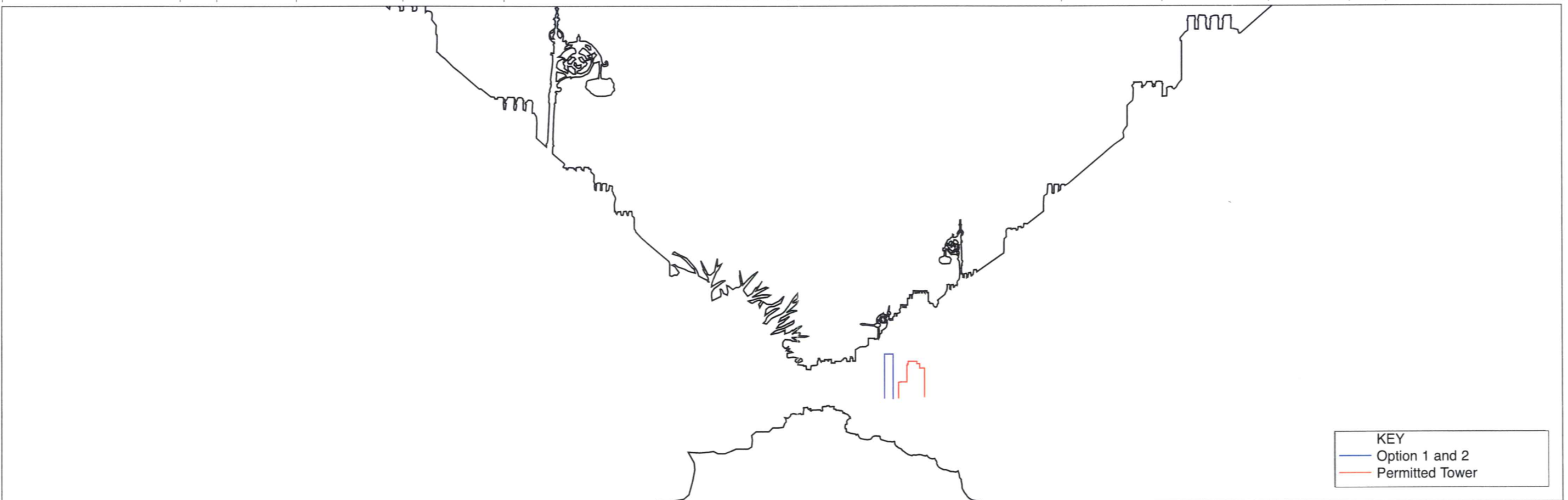
73.5° | 60° | 57° | 50° | 40° | 30° | ANGLE OF VISION SCALE | 30° | 40° | 50° | 57° | 60° | 73.5°







73.5° | 60° | 57° | 50° | 40° | 30° | ANGLE OF VISION SCALE | 30° | 40° | 50° | 57° | 60° | 73.5°







73.5° | 60° | 57° | 50° | 40° | 30° | 30° | 40° | 50° | 57° | 60° | 73.5°

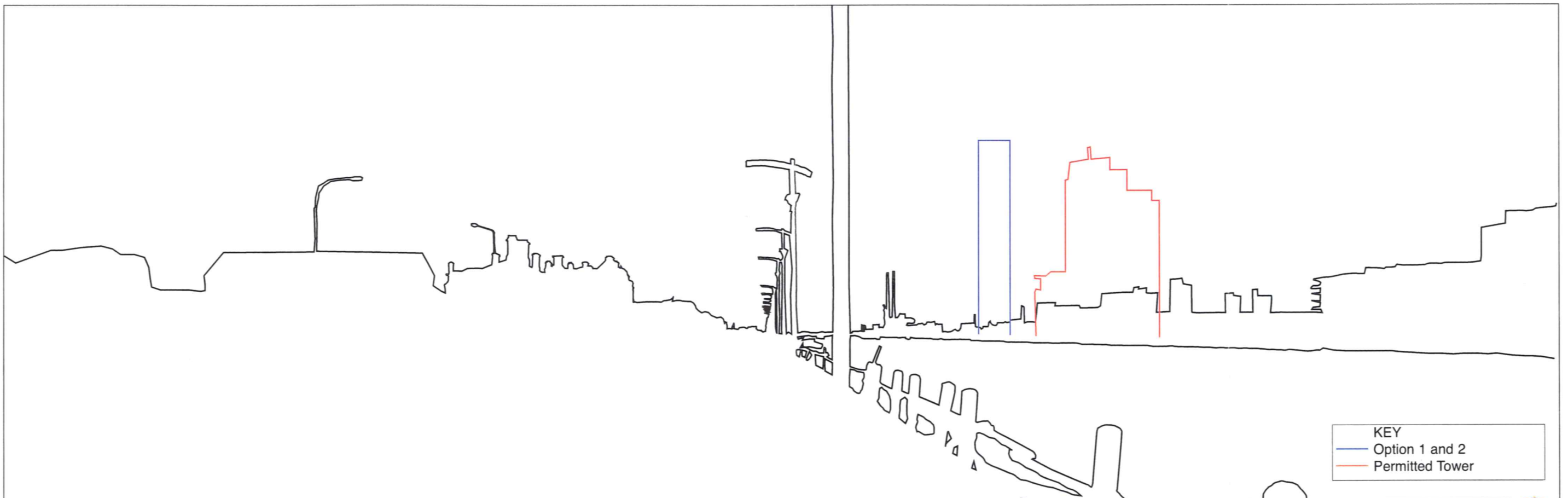
ANGLE OF VISION SCALE







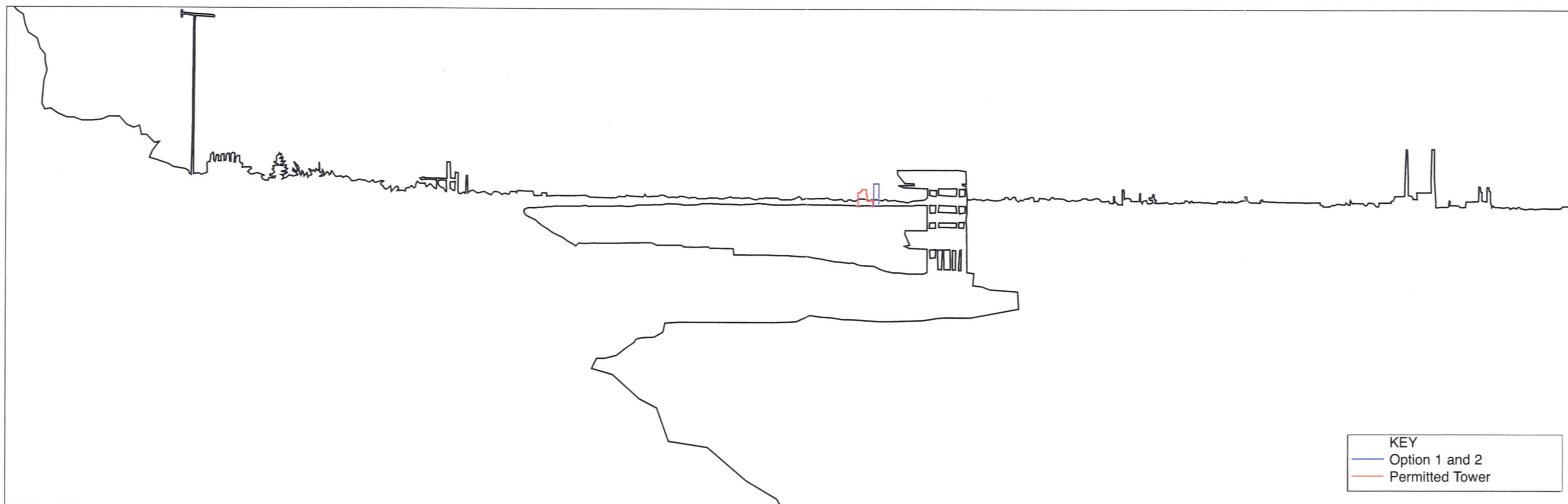
73.5° | 60° | 57° | 50° | 40° | 30° | ANGLE OF VISION SCALE | 30° | 40° | 50° | 57° | 60° | 73.5°







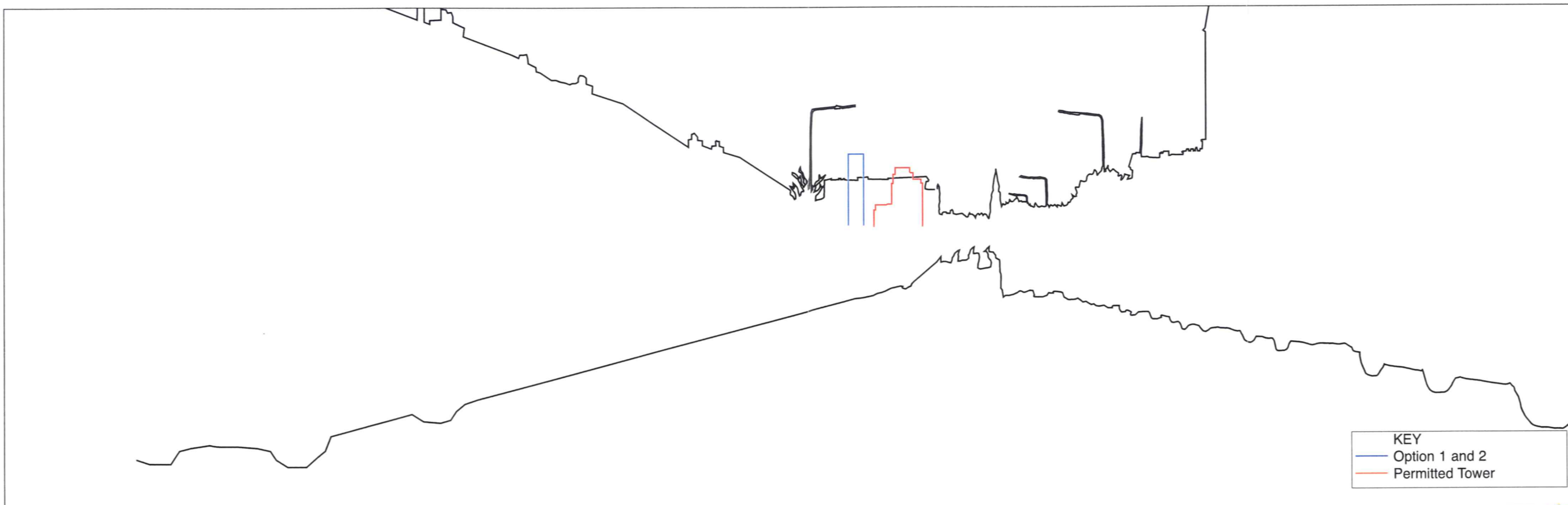
73.5° | 60° | 57° | 50° | 40° | 30° | ANGLE OF VISION SCALE | 30° | 40° | 50° | 57° | 60° | 73.5°







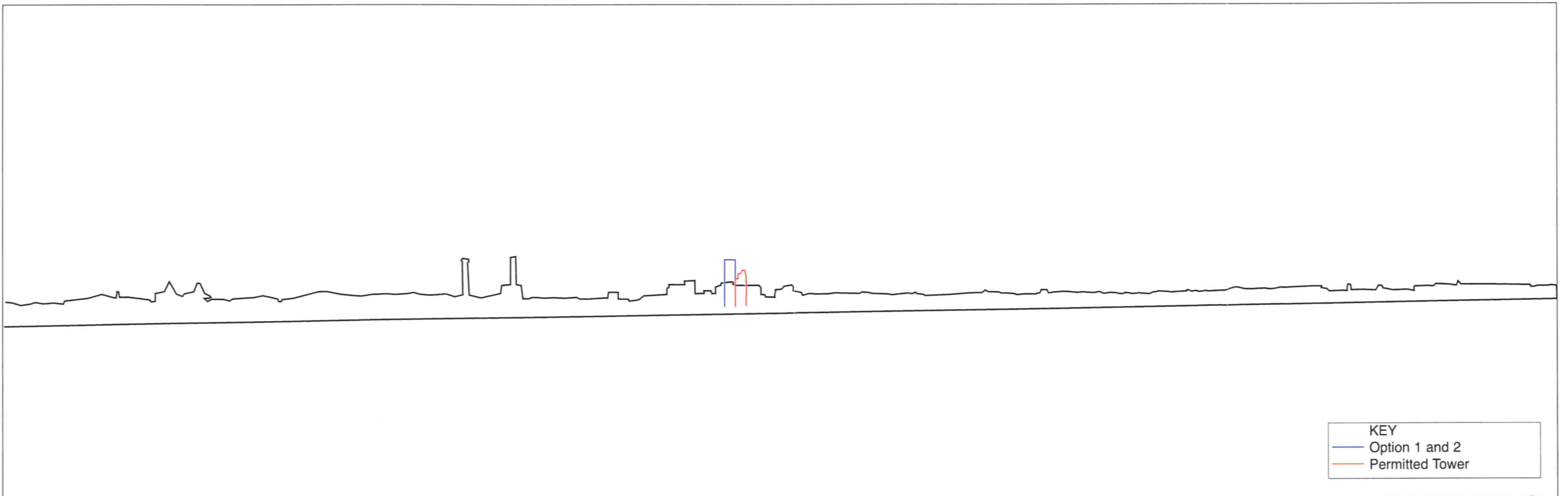
73.5° | 60° | 57° | 50° | 40° | 30° | ANGLE OF VISION SCALE | 30° | 40° | 50° | 57° | 60° | 73.5°







73.5°      60°   57°      50°      40°      30°      ANGLE OF VISION SCALE      30°      40°      50°      57°   60°      73.5°

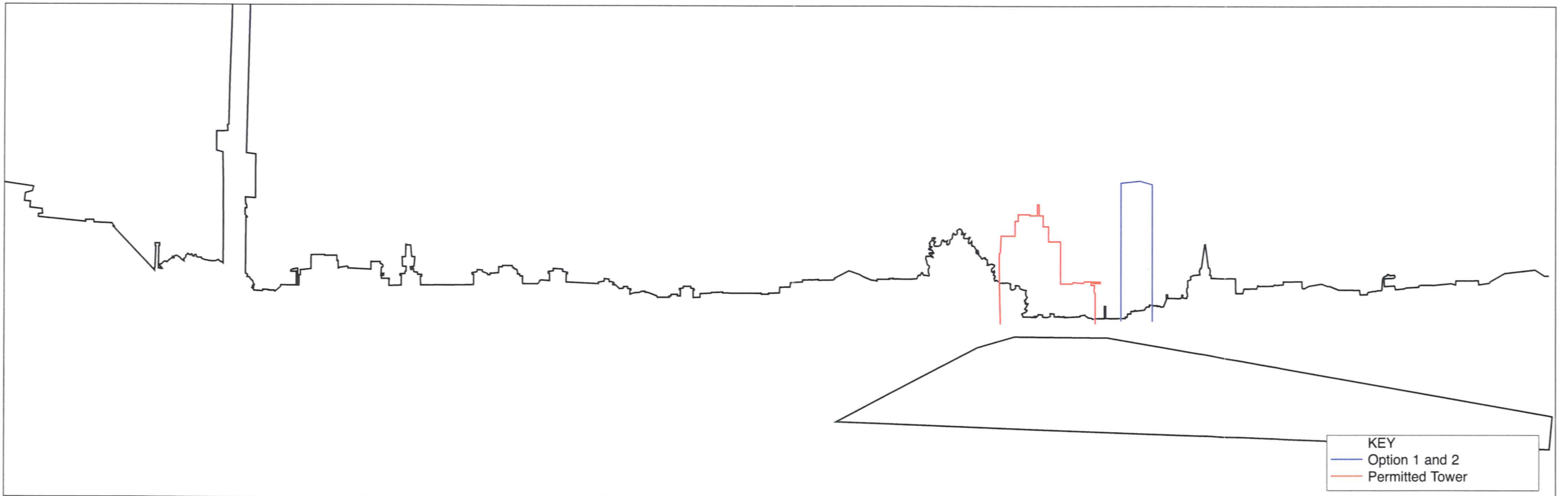


KEY  
 — Option 1 and 2  
 — Permitted Tower





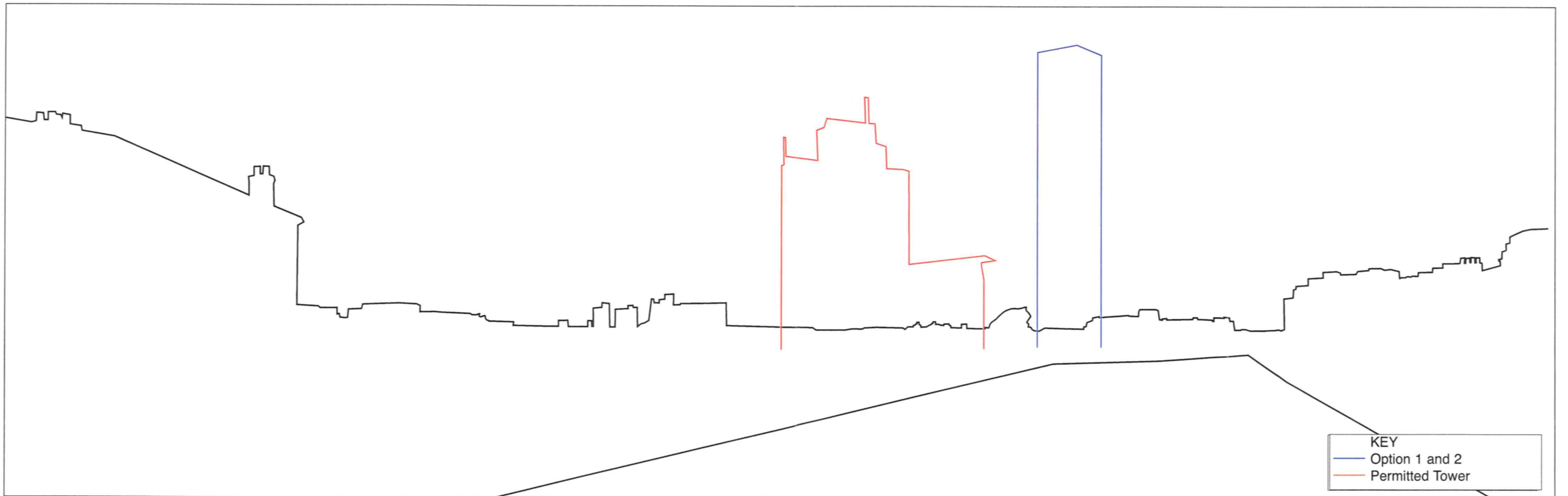
73.5° | 60° | 57° | 50° | 40° | 30° | ANGLE OF VISION SCALE | 30° | 40° | 50° | 57° | 60° | 73.5°







73.5° | 60° | 57° | 50° | 40° | 30° | ANGLE OF VISION SCALE | 30° | 40° | 50° | 57° | 60° | 73.5°







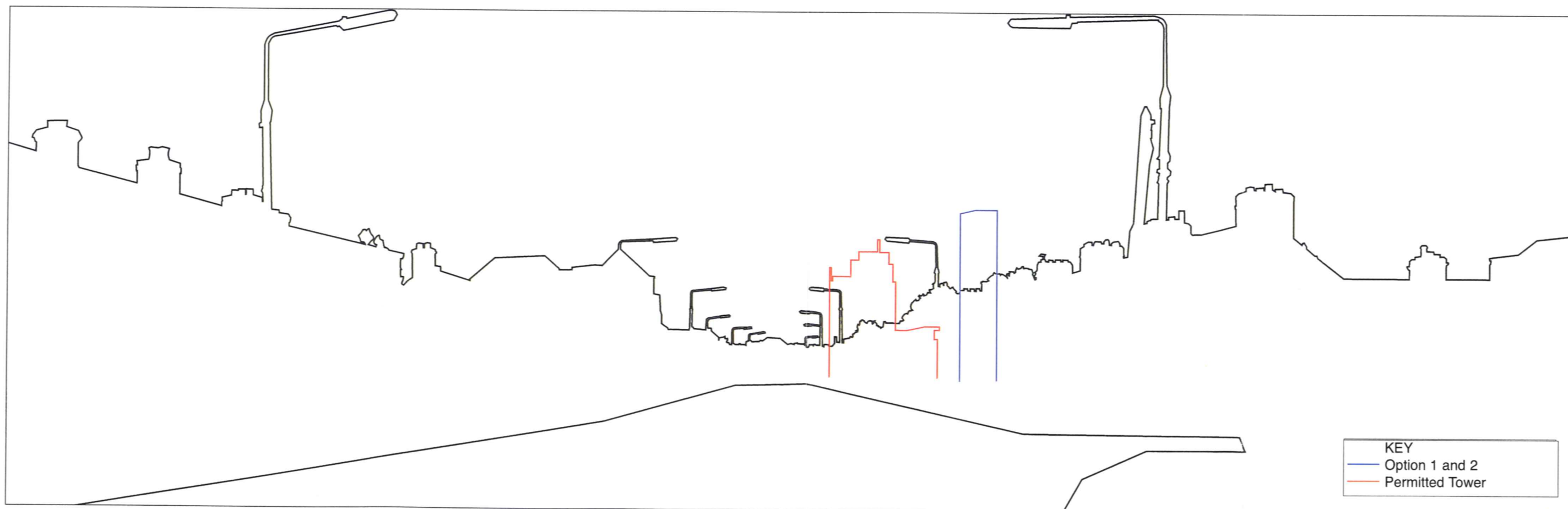
73.5° | 60° | 57° | 50° | 40° | 30° | ANGLE OF VISION SCALE | 30° | 40° | 50° | 57° | 60° | 73.5°







73.5° | 60° | 57° | 50° | 40° | 30° | ANGLE OF VISION SCALE | 30° | 40° | 50° | 57° | 60° | 73.5°

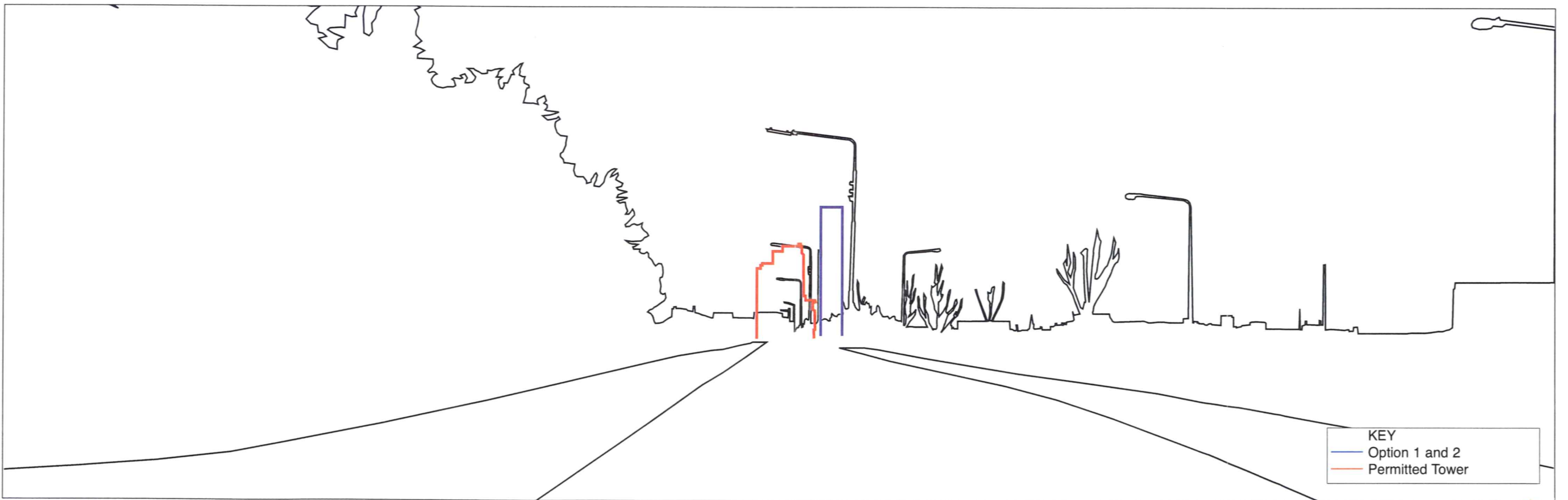


KEY  
 — Option 1 and 2  
 — Permitted Tower

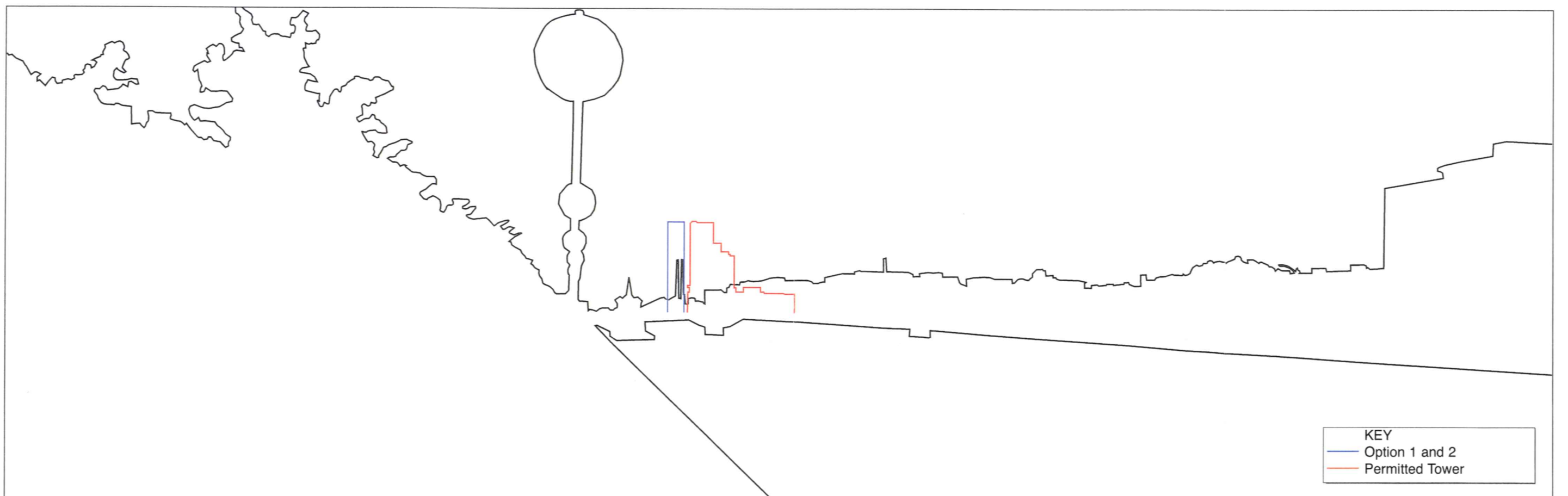




73.5° | 60° | 57° | 50° | 40° | 30° | ANGLE OF VISION SCALE | 30° | 40° | 50° | 57° | 60° | 73.5°



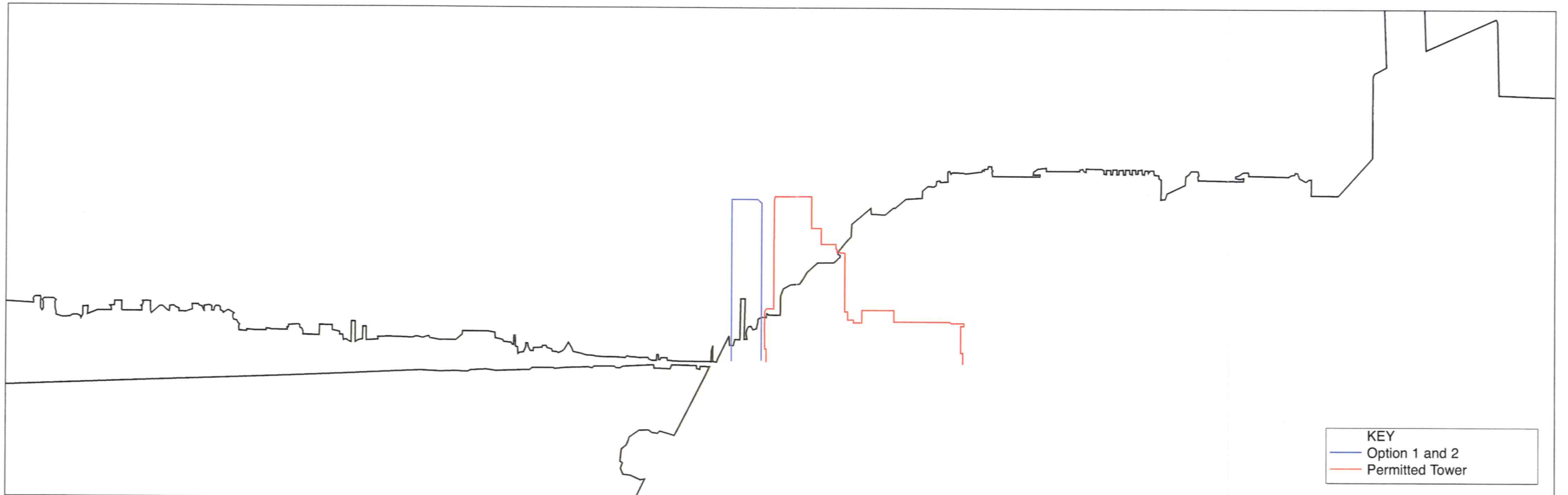






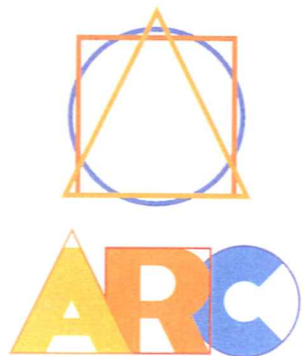


73.5° | 60° | 57° | 50° | 40° | 30° | ANGLE OF VISION SCALE | 30° | 40° | 50° | 57° | 60° | 73.5°





SHADOW ANALYSIS  
OF  
CUMULATIVE IMPACT OF PREVIOUSLY PERMITTED TOWER AND  
PROPOSED TOWER (OPTION 1 AND 2)  
AT  
GRAND CANAL DOCK  
AUGUST 2005



**ARC** Architectural  
Consultants Limited

